



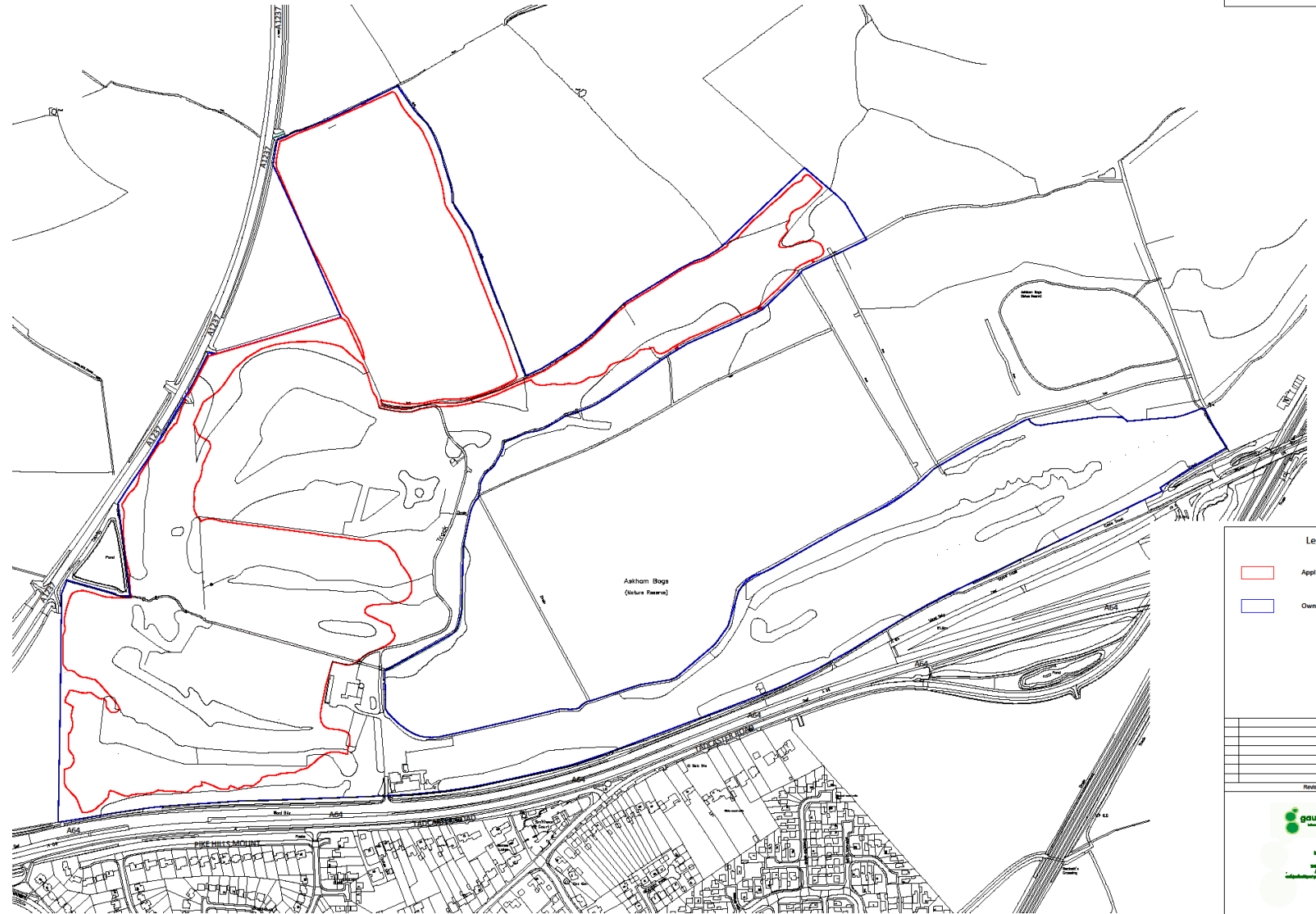
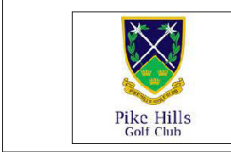
Planning Committee A

To be held on 5th October 2023

22/01074/FULM – Pikehills Golf Club, Tadcaster Road, Copmanthorpe, York

Redevelopment of the Pike Hills Golf Course involving importation
and grading of soils

Site Location Plan



Legend:

▭	Application Boundary (231632 m ²)
▭	Ownership Boundary (492550 m ²)

Revision History	



City of York Council Planning Committee Meeting - 5th October 2023



Client:	Pike Hills Golf Club		
Project:	Course Improvements		
Drawing:	Location Plan		
Drawn By:	G.P.	Drawn Date:	4th Sept 2018
Scale:	1:25000:0A1	Revised:	1st April 2022
Drawing No.:	GDP-254-2824	Revision:	C 1 of 1



Askham Bog Outer Area

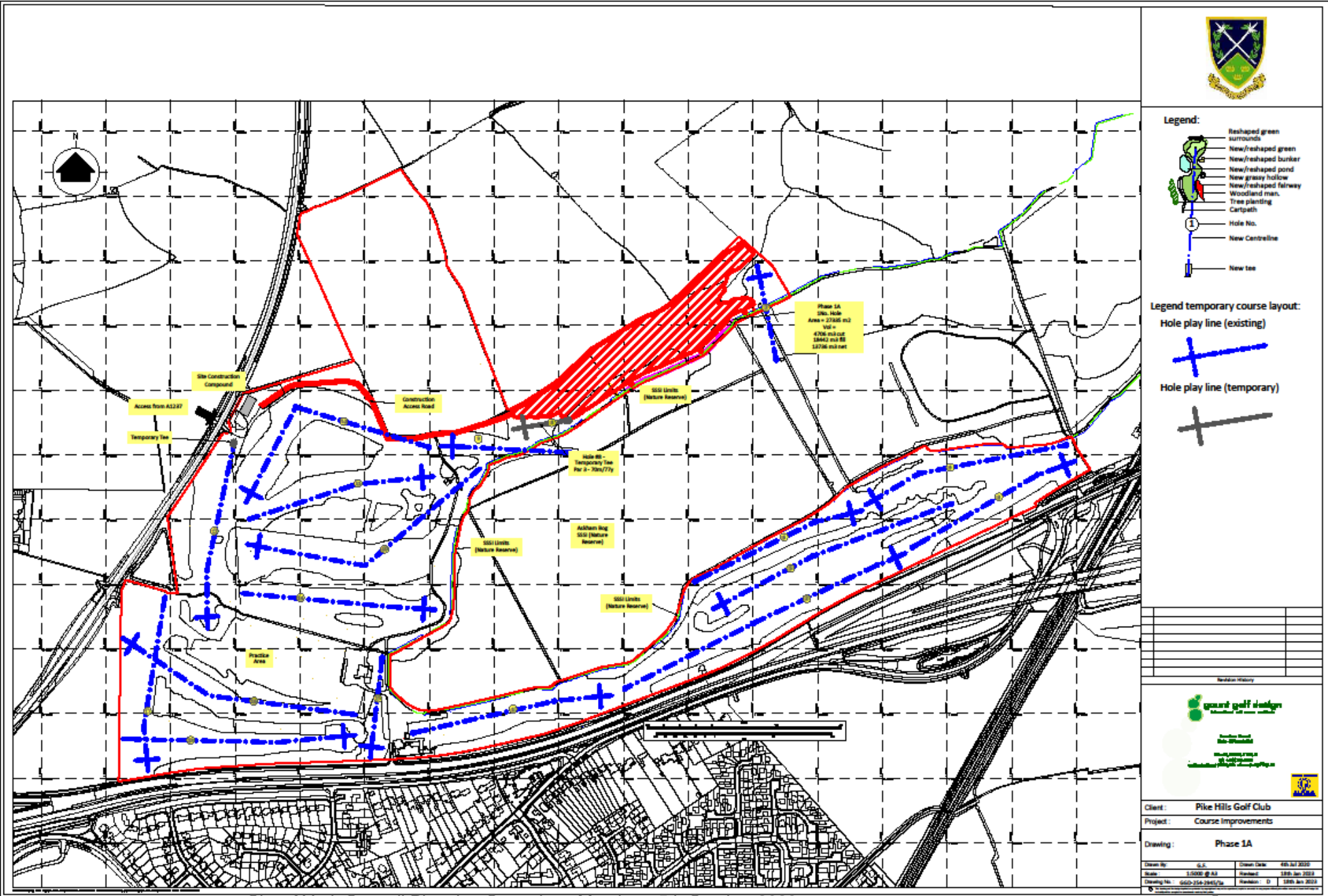


Existing Fairway



Waterlogging at Hole 4

Phase 1A Plan

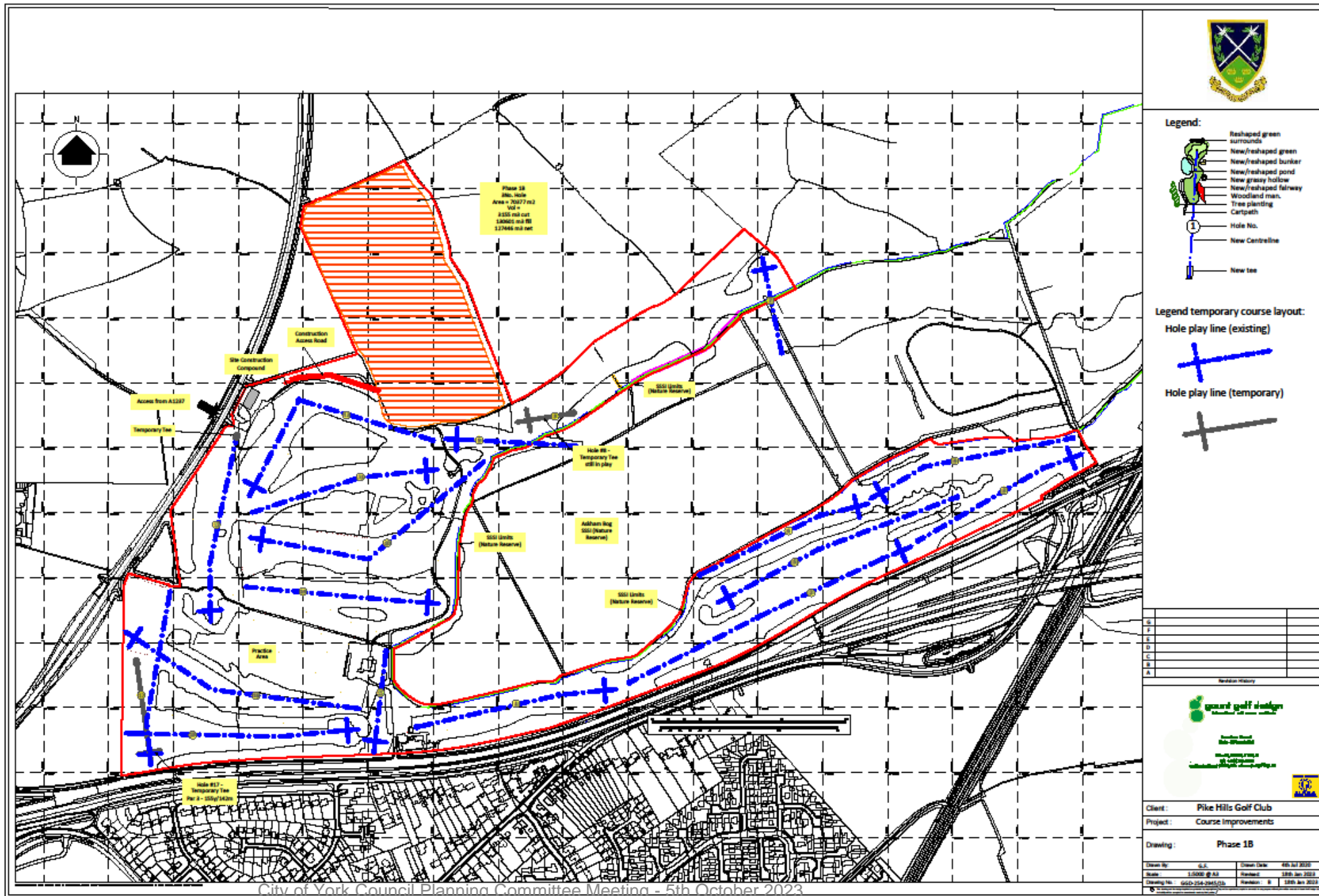



- Legend:**
- Reshaped green surrounds
 - New/reshaped bunker
 - New/reshaped pond
 - New/reshaped grassy hollow
 - New/reshaped fairway
 - Woodland man
 - Tree planting
 - Cartpath
 - Hole No.
 - New Control line
 - New tee

- Legend temporary course layout:**
- Hole play line (existing)
 - Hole play line (temporary)
 - Hole play line (temporary)



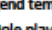

Revision History			
Client: Pike Hills Golf Club Project: Course Improvements Drawing: Phase 1A			
Drawn By:	G.S.	Drawn Date:	06/07/2022
Scale:	1:5000 @ A3	Revised:	18/06/2023
Printing No.:	0001-0001 (001/001)	Revision:	0

Phase 1B Plan

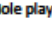





Legend:

-  Reshaped green surrounds
-  New/reshaped green
-  New/reshaped bunker
-  New/reshaped pond
-  New grassy hollow
-  New/reshaped fairway
-  Woodland man.
-  Tree planting
-  Cartpath
-  Hole No.
-  New Centreline
-  New tee

Legend temporary course layout:


-  Hole play line (existing)
-  Hole play line (temporary)

A	
B	
C	
D	
E	
F	
G	
H	
I	
J	
K	
L	
M	
N	
O	
P	
Q	
R	
S	
T	
U	
V	
W	
X	
Y	
Z	

Revision History

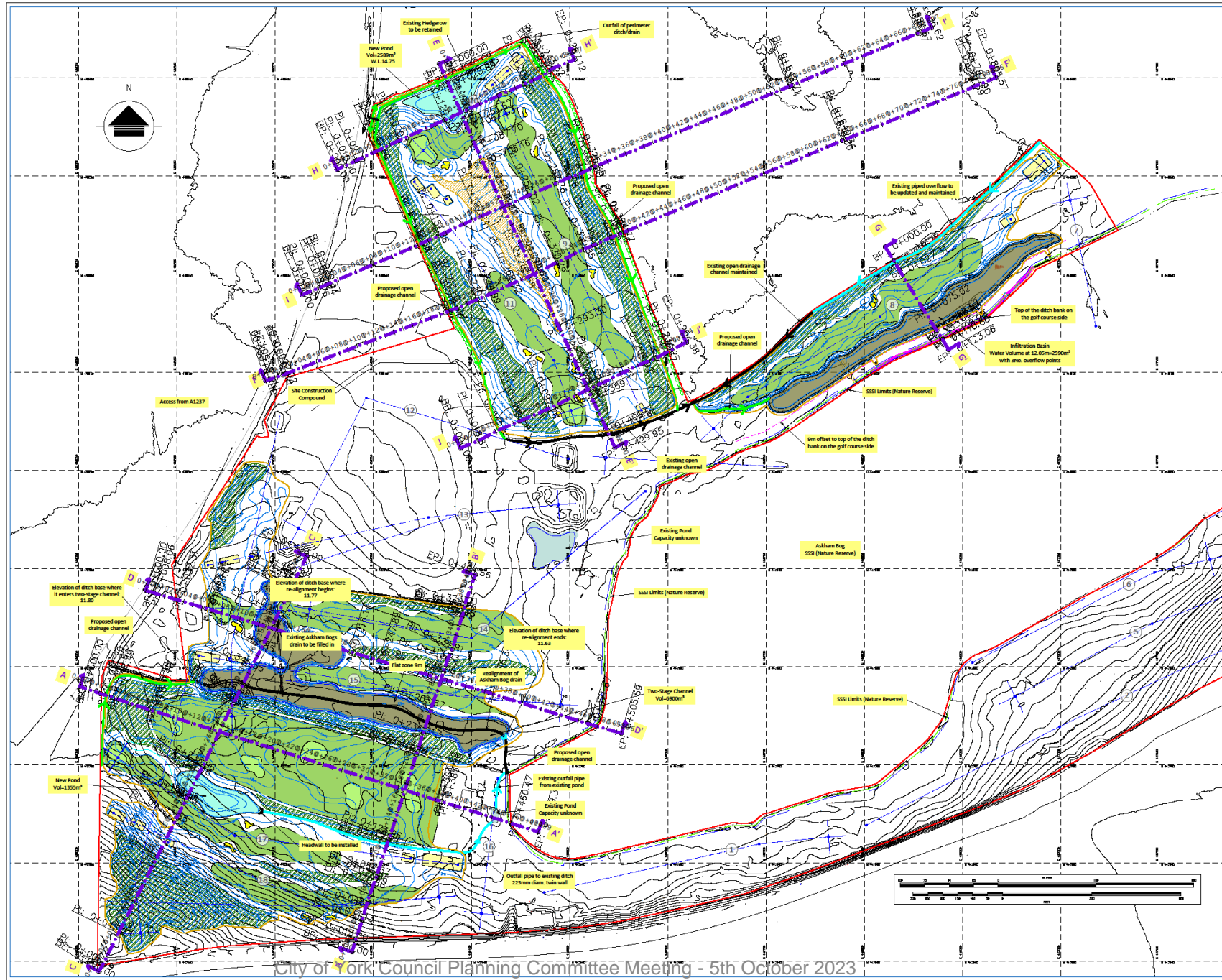


Author: Grant
 Designer: Grant
 Checker: Grant
 Date: 15/07/2023



Client: Pike Hills Golf Club	
Project: Course Improvements	
Drawing: Phase 1B	
Drawn by: G.J. Check Date: 05 Jul 2023	Scale: 1:5000 @ A3 Printed: 15 Jul 2023
Drawing No: 5455-254-2023(1)	Revision: 0 Date: 15 Jul 2023

Earth Works Plan



Legend:

- Reshaped green surrounds
- New/reshaped green
- New/reshaped bunker
- New/reshaped pond
- New grassy hollow
- New/reshaped fairway
- Woodland man.
- Tree planting
- Cartpath
- Hole No.
- New Centreline
- New Tee

- Cross section lines
- Top of the ditch bank on the golf course side
- Extent of earthworks
- Existing open drainage channels
- Proposed open drainage channels
- Proposed Contours
- Direction of surface water flow
- Piped Outfall
- Headwall

Revision	Description	Date
G	Revised planting	18.01.2023
F	Revised cross sections F-F' and I-I'	06.01.2023
E	New cross sections	09.12.2022
D	Contour design amendments, added tree survey	14.11.2022
C	Contour design & Phasing amendment	28.03.2022
B	Contour design amendment	26.07.2020
A	Phasing sequence changed	01.07.2020



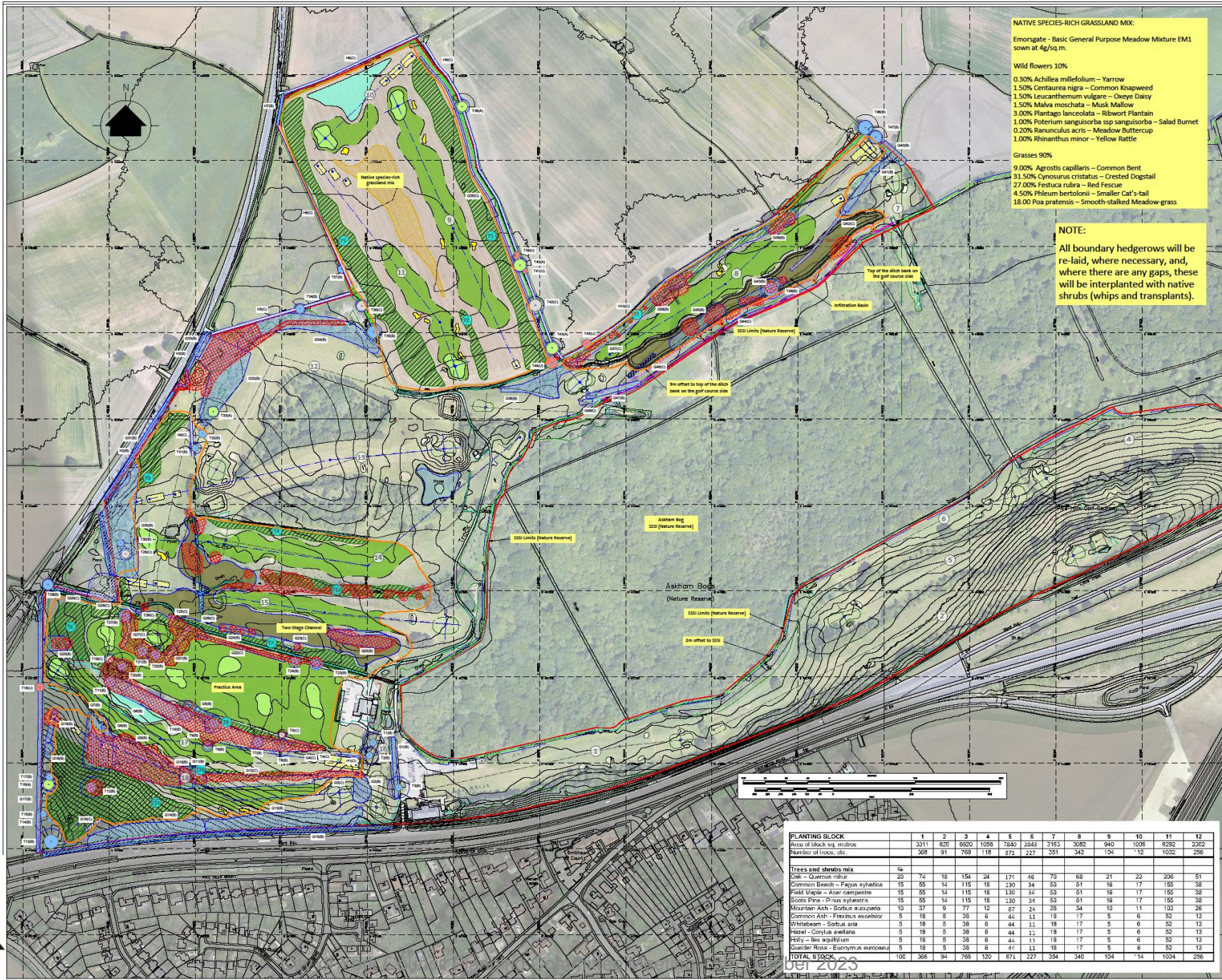
Jonell van der Merwe
 Lead Designer
 0115 953 1111
 100, 101, 102, 103, 104, 105, 106, 107, 108, 109, 110, 111, 112, 113, 114, 115, 116, 117, 118, 119, 120, 121, 122, 123, 124, 125, 126, 127, 128, 129, 130, 131, 132, 133, 134, 135, 136, 137, 138, 139, 140, 141, 142, 143, 144, 145, 146, 147, 148, 149, 150, 151, 152, 153, 154, 155, 156, 157, 158, 159, 160, 161, 162, 163, 164, 165, 166, 167, 168, 169, 170, 171, 172, 173, 174, 175, 176, 177, 178, 179, 180, 181, 182, 183, 184, 185, 186, 187, 188, 189, 190, 191, 192, 193, 194, 195, 196, 197, 198, 199, 200

Client : Pike Hills Golf Club
 Project : Course Improvements

Drawing : Earthworks Plan

Drawn By	G.F.	Drawn Date	6th Sep 2017
Scale	1:1750 @ A1	Revised	18th Jan 2023
Drawing No.	G00-2023-2946	Revision	G 18th Jan 2023

Landscape Plan



NATIVE SPECIES-RICH GRASSLAND MIX:
 Emorsgate - Basic General Purpose Meadow Mixture EML sown at 4g/sq m.

Wild flowers 10%
 0.30% Achillea millefolium – Yarrow
 1.50% Centaurea nigra – Common Knapweed
 1.50% Leucanthemum vulgare – Oxeye Daisy
 1.50% Malva moschata – Musk Mallow
 3.00% Plantago lanceolata – Ribwort Plantain
 1.00% Poterium sanguisorba ssp sanguisorba – Salad Burnet
 0.20% Ranunculus acris – Meadow Buttercup
 1.00% Rhinanthus minor – Yellow Rattle

Grasses 90%
 31.50% Cynosurus cristatus – Crested Dogtail
 27.00% Festuca rubra – Red Fescue
 4.50% Phleum bertolonii – Smaller Cat's-tail
 18.00% Poa pratensis – Smooth-stalked Meadow-grass

NOTE:
 All boundary hedgerows will be re-laid, where necessary, and, where there are any gaps, these will be interplanted with native shrubs (whips and transplants).

Legend:

- Reshaped green surrounds
- New/reshaped green
- New/reshaped bunker
- New/reshaped pond
- New grassy hollow
- New/reshaped fairway
- Woodland man.
- New planting
- Cartpath
- Hole No.
- New Centreline
- New tree

Top of the bank on the golf course side

Extent of SSSI Area

Extent of earthworks

New Tree/Shrub planting (41777 m²)

Tree/Shrub clearance (27332 m²)

KEY

- Category 1 - Low Level of Protection (L1)
- Category 2 - Low Level of Protection (L2)
- Category 3 - Low Level of Protection (L3)
- Category 4 - Low Level of Protection (L4)
- Category 5 - Low Level of Protection (L5)
- Category 6 - Low Level of Protection (L6)
- Category 7 - Low Level of Protection (L7)
- Category 8 - Low Level of Protection (L8)
- Category 9 - Low Level of Protection (L9)
- Category 10 - Low Level of Protection (L10)
- Category 11 - Low Level of Protection (L11)
- Category 12 - Low Level of Protection (L12)
- Category 13 - Low Level of Protection (L13)
- Category 14 - Low Level of Protection (L14)
- Category 15 - Low Level of Protection (L15)
- Category 16 - Low Level of Protection (L16)
- Category 17 - Low Level of Protection (L17)
- Category 18 - Low Level of Protection (L18)
- Category 19 - Low Level of Protection (L19)
- Category 20 - Low Level of Protection (L20)
- Category 21 - Low Level of Protection (L21)
- Category 22 - Low Level of Protection (L22)
- Category 23 - Low Level of Protection (L23)
- Category 24 - Low Level of Protection (L24)
- Category 25 - Low Level of Protection (L25)
- Category 26 - Low Level of Protection (L26)
- Category 27 - Low Level of Protection (L27)
- Category 28 - Low Level of Protection (L28)
- Category 29 - Low Level of Protection (L29)
- Category 30 - Low Level of Protection (L30)
- Category 31 - Low Level of Protection (L31)
- Category 32 - Low Level of Protection (L32)
- Category 33 - Low Level of Protection (L33)
- Category 34 - Low Level of Protection (L34)
- Category 35 - Low Level of Protection (L35)
- Category 36 - Low Level of Protection (L36)
- Category 37 - Low Level of Protection (L37)
- Category 38 - Low Level of Protection (L38)
- Category 39 - Low Level of Protection (L39)
- Category 40 - Low Level of Protection (L40)
- Category 41 - Low Level of Protection (L41)
- Category 42 - Low Level of Protection (L42)
- Category 43 - Low Level of Protection (L43)
- Category 44 - Low Level of Protection (L44)
- Category 45 - Low Level of Protection (L45)
- Category 46 - Low Level of Protection (L46)
- Category 47 - Low Level of Protection (L47)
- Category 48 - Low Level of Protection (L48)
- Category 49 - Low Level of Protection (L49)
- Category 50 - Low Level of Protection (L50)
- Category 51 - Low Level of Protection (L51)
- Category 52 - Low Level of Protection (L52)
- Category 53 - Low Level of Protection (L53)
- Category 54 - Low Level of Protection (L54)
- Category 55 - Low Level of Protection (L55)
- Category 56 - Low Level of Protection (L56)
- Category 57 - Low Level of Protection (L57)
- Category 58 - Low Level of Protection (L58)
- Category 59 - Low Level of Protection (L59)
- Category 60 - Low Level of Protection (L60)
- Category 61 - Low Level of Protection (L61)
- Category 62 - Low Level of Protection (L62)
- Category 63 - Low Level of Protection (L63)
- Category 64 - Low Level of Protection (L64)
- Category 65 - Low Level of Protection (L65)
- Category 66 - Low Level of Protection (L66)
- Category 67 - Low Level of Protection (L67)
- Category 68 - Low Level of Protection (L68)
- Category 69 - Low Level of Protection (L69)
- Category 70 - Low Level of Protection (L70)
- Category 71 - Low Level of Protection (L71)
- Category 72 - Low Level of Protection (L72)
- Category 73 - Low Level of Protection (L73)
- Category 74 - Low Level of Protection (L74)
- Category 75 - Low Level of Protection (L75)
- Category 76 - Low Level of Protection (L76)
- Category 77 - Low Level of Protection (L77)
- Category 78 - Low Level of Protection (L78)
- Category 79 - Low Level of Protection (L79)
- Category 80 - Low Level of Protection (L80)
- Category 81 - Low Level of Protection (L81)
- Category 82 - Low Level of Protection (L82)
- Category 83 - Low Level of Protection (L83)
- Category 84 - Low Level of Protection (L84)
- Category 85 - Low Level of Protection (L85)
- Category 86 - Low Level of Protection (L86)
- Category 87 - Low Level of Protection (L87)
- Category 88 - Low Level of Protection (L88)
- Category 89 - Low Level of Protection (L89)
- Category 90 - Low Level of Protection (L90)
- Category 91 - Low Level of Protection (L91)
- Category 92 - Low Level of Protection (L92)
- Category 93 - Low Level of Protection (L93)
- Category 94 - Low Level of Protection (L94)
- Category 95 - Low Level of Protection (L95)
- Category 96 - Low Level of Protection (L96)
- Category 97 - Low Level of Protection (L97)
- Category 98 - Low Level of Protection (L98)
- Category 99 - Low Level of Protection (L99)
- Category 100 - Low Level of Protection (L100)

Revision	Description	Date
H	Revised planting	18.01.2023
G	Added tree survey	10.11.2022
F	Contour design & Phasing amendment	01.04.2022
E	Contour design & Phasing amendment	29.11.2021
D	Contour design & Phasing amendment	28.07.2020
C	Contour design & Phasing amendment	22.07.2019
B	Contour design amendment	20.08.2018
A	Phasing sequence changed	06.02.2018

gaunt golf design
 landscape & golf course solutions

James Cook
 New Member

Member of the RGS
 Registered Professional Landscape Architect

PLANTING BLOCK	1	2	3	4	5	6	7	8	9	10	11	12
Area of block sq. metres	3311	820	8920	1058	7840	2643	3163	3082	940	1008	9282	2352
Number of trees, etc.	368	91	768	118	371	227	351	342	104	12	1032	258
Trees and shrubs mix												
Oak - Quercus robur	20	74	18	154	24	177	46	70	68	21	22	208
Common Beech - Fagus sylvatica	15	56	14	115	18	230	34	53	51	16	17	155
Field Maple - Acer campestre	15	55	14	115	18	130	34	53	51	16	17	155
Scotts Pine - Pinus sylvestris	15	55	14	115	18	130	34	53	51	16	17	155
Maritime Ash - Fraxinus maritima	10	37	9	77	12	87	24	35	34	10	11	103
Common Ash - Fraxinus excelsior	5	18	5	38	6	44	11	18	17	5	6	52
Whitebeam - Sorbus aria	5	18	5	38	6	44	11	18	17	5	6	52
Hazel - Corylus avellana	5	18	5	38	6	44	11	18	17	5	6	52
Holly - Ilex aquifolium	5	18	5	38	6	44	11	18	17	5	6	52
Guelder Rose - Euonymus europaeus	5	18	5	38	6	44	11	18	17	5	6	52
TOTAL STOCK	100	368	94	768	120	871	227	354	340	104	14	1034

Client: **Pike Hills Golf Club**

Project: **Course Improvements**

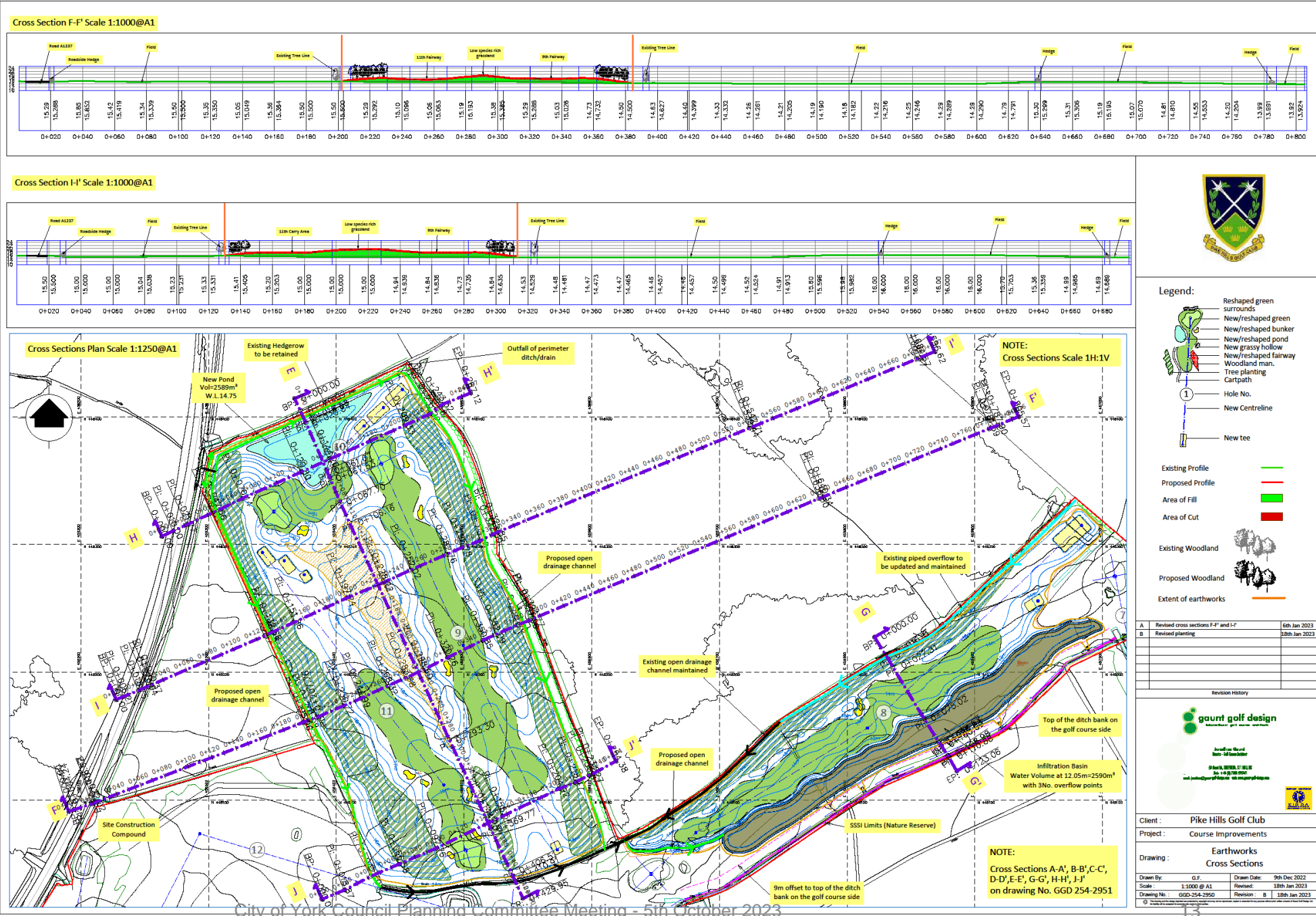
Drawing: **Landscape Plan**

Drawn By: **G.F.** Drawn Date: **6th Sep 2017**

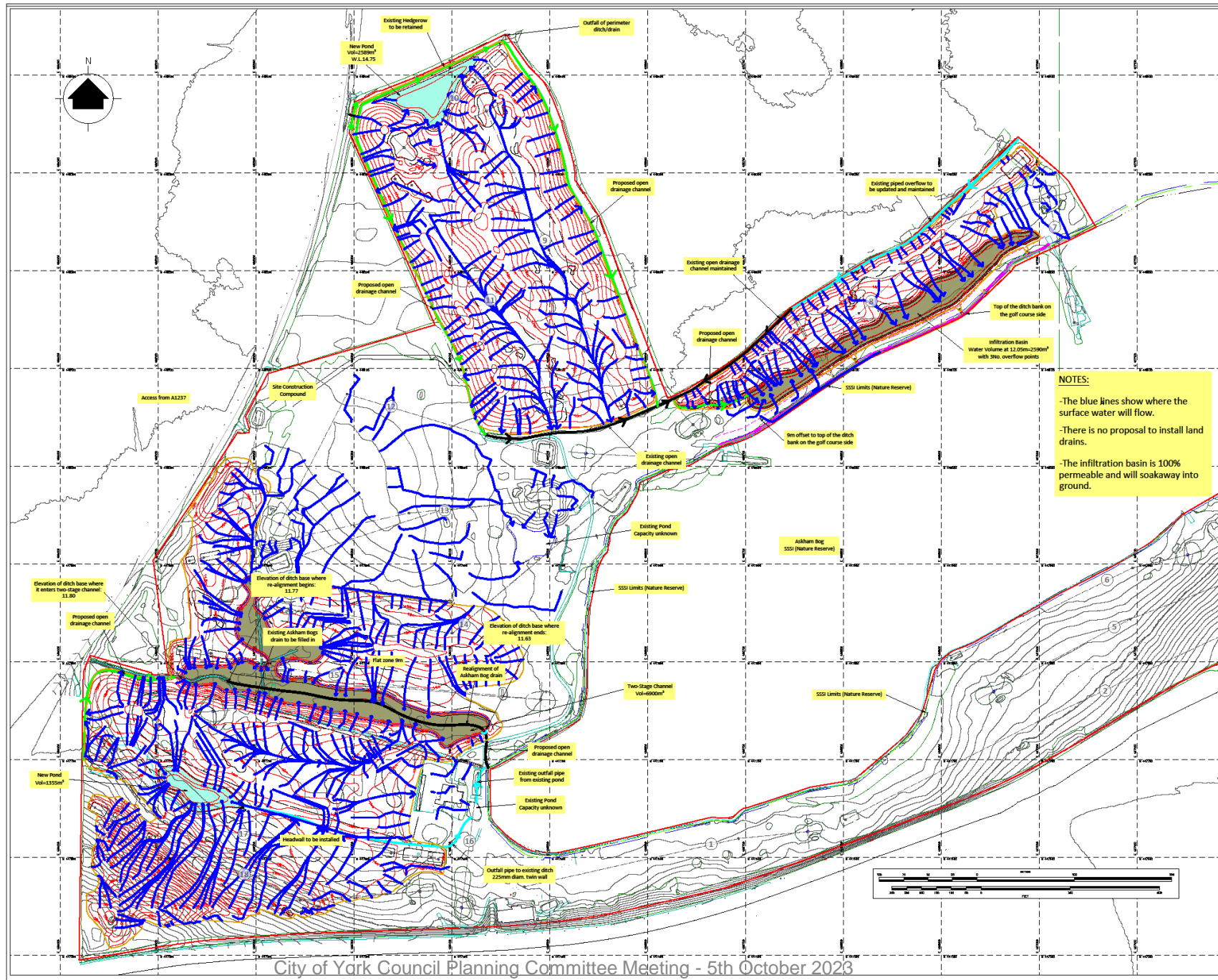
Scale: **1:2000 @ A3** Revised: **18th Jan 2023**

Drawing No: **001-2017-017** Revision: **H** **18th Jan 2023**

Cross Sections (2)



Surface Water Management Plan



NOTES:

- The blue lines show where the surface water will flow.
- There is no proposal to install land drains.
- The infiltration basin is 100% permeable and will soakaway into ground.

- Legend:**
- Reshaped green surrounds
 - New/reshaped green
 - New/reshaped bunker
 - New/reshaped pond
 - New/grassy hollow
 - New/reshaped fairway
 - Woodland man.
 - Tree planting
 - Cartpath
 - Hole No.
 - New Centreline
 - New tree

- Top of the ditch bank on the golf course side
- Extent of earthworks
- Existing open drainage channels
- Proposed open drainage channels
- Proposed Contours
- Direction of surface water flow
- Piped Outfall
- Headwall

Revision	Description	Date
G	Revised earthworks	20.01.2023
F	Revised proposed ditch	21.12.2022
E	Revised earthworks	11.11.2022
D	Contour design & phasing amendment	28.03.2022
C	Updated phasing/earthworks	26.07.2020
B	Updated phasing/earthworks	26.07.2019
A	Revised areas and contours	20.08.2018



Client : Pike Hills Golf Club
 Project : Course Improvements
 Drawing : Surface Water Analysis Plan
 Drawn By : G.F. Drawn Date : 6th Feb 2018
 Scale : 1:1750 @ A1 Revised : 20th Jan 2023
 Drawing No. : G00-256-2782 Revision : G 20th Jan 2023

